

Élan Cité

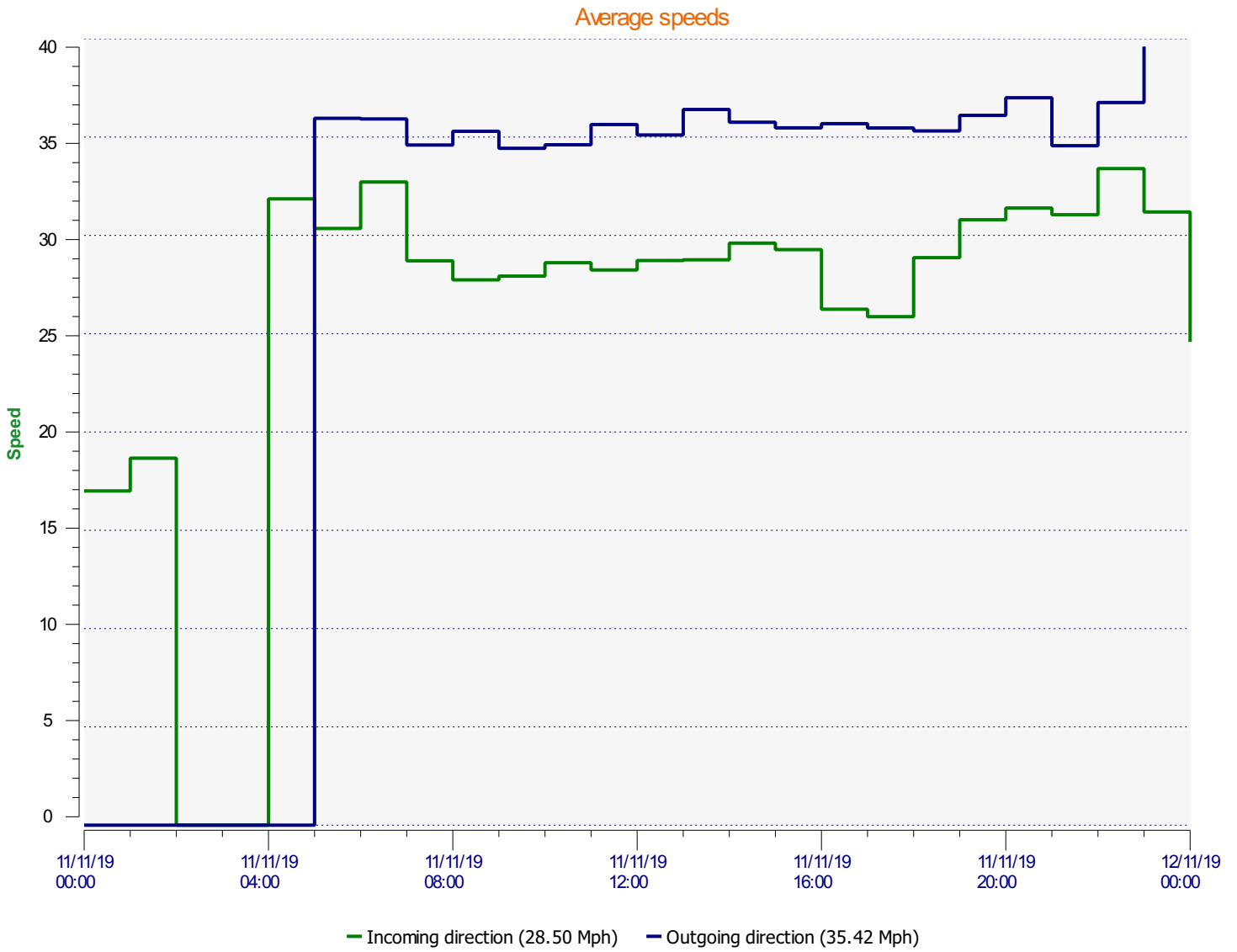


DÉTECTER • INFORMER • SÉCURISER

Start date: Monday, November 11, 2019 12:00 AM
End date: Tuesday, November 12, 2019 12:00 AM

Location:

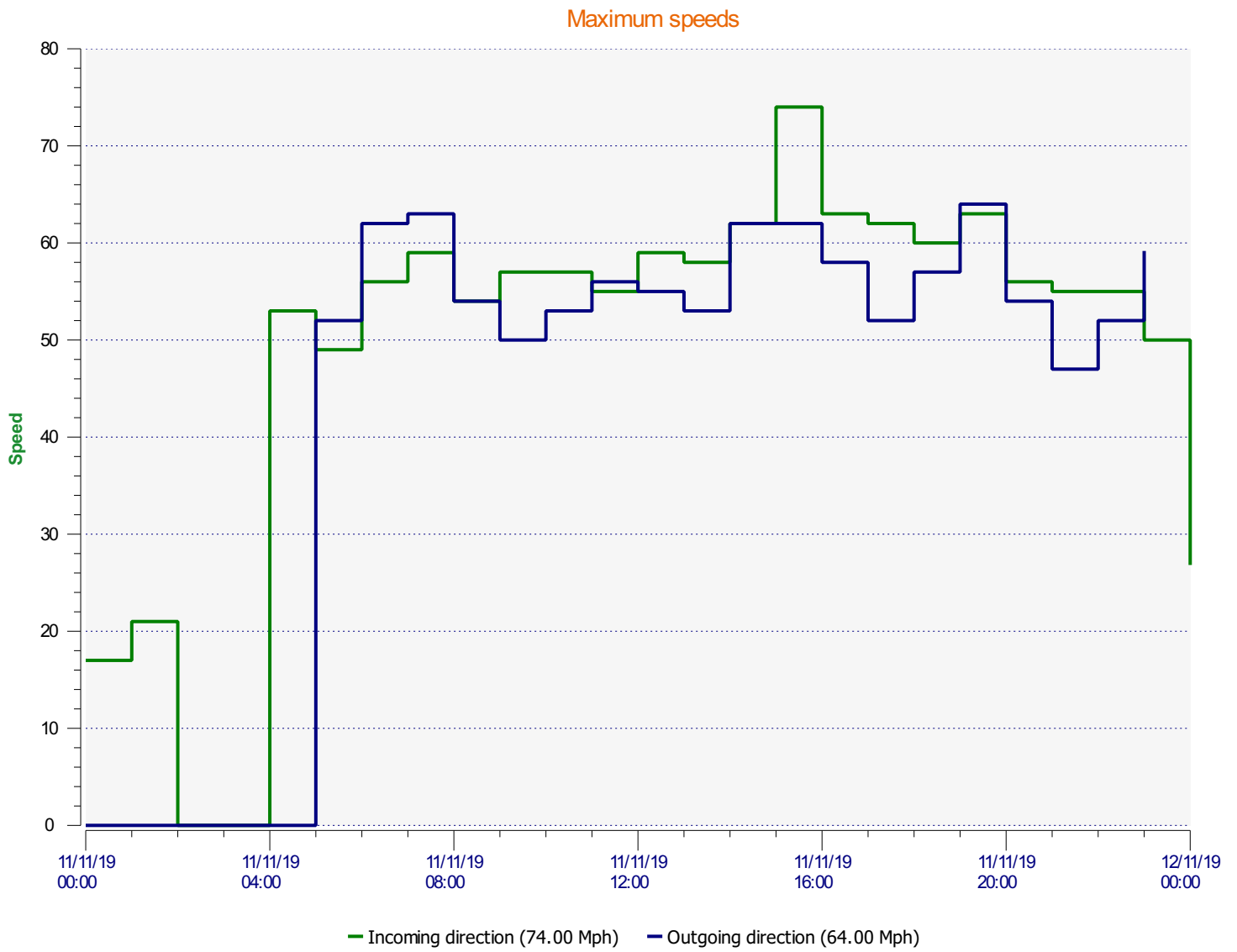
Comments:



Start date: Monday, November 11, 2019 12:00 AM
End date: Tuesday, November 12, 2019 12:00 AM

Location:

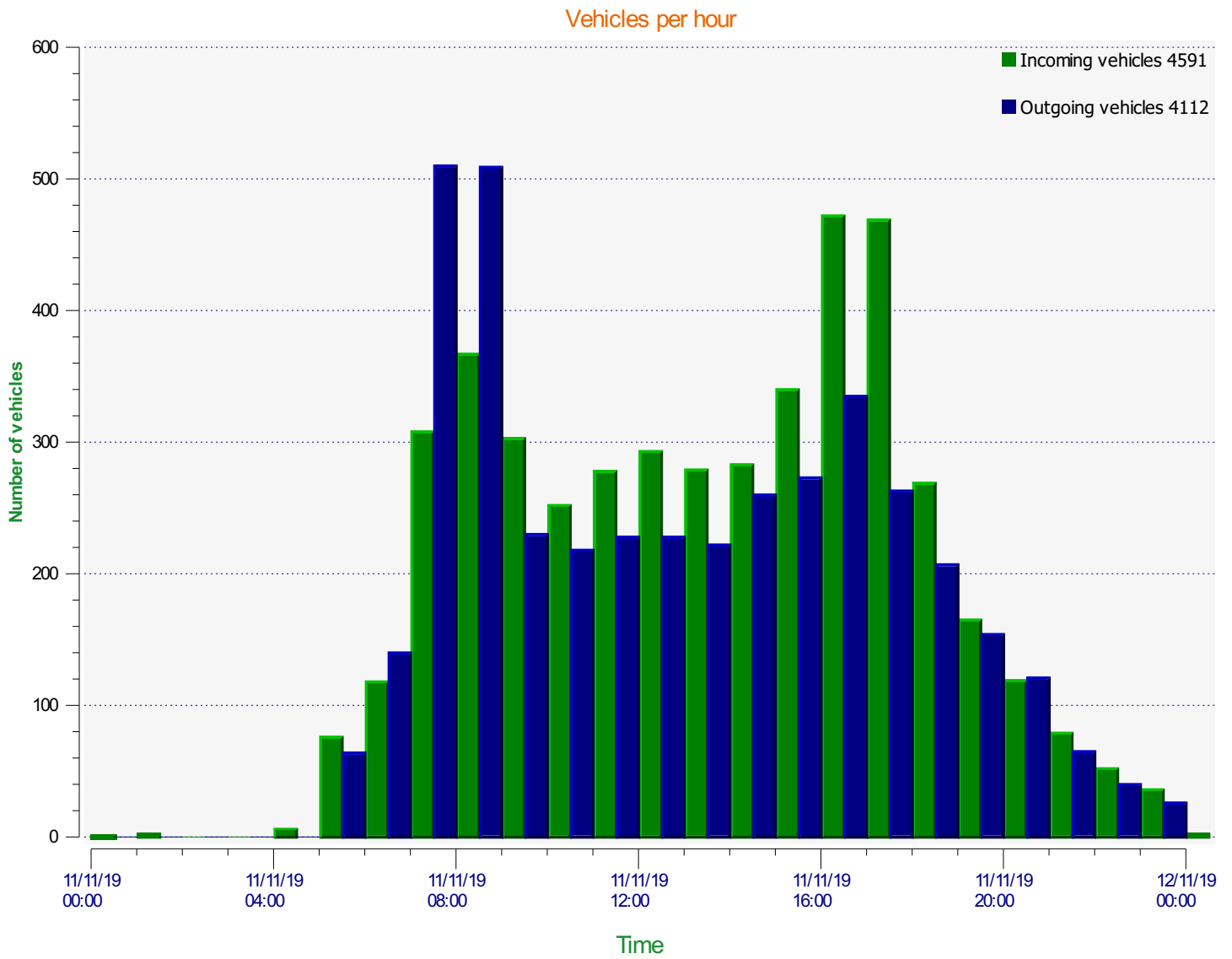
Comments:



Start date: Monday, November 11, 2019 12:00 AM
End date: Tuesday, November 12, 2019 12:00 AM

Location:

Comments:

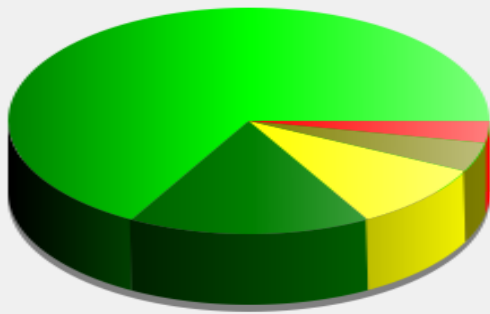


Start date: Monday, November 11, 2019 12:00 AM
End date: Tuesday, November 12, 2019 12:00 AM

Location:

Comments:

Incoming vehicles



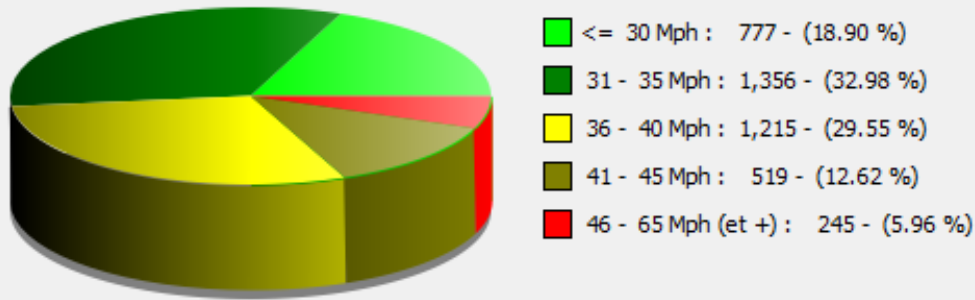
■	<= 30 Mph : 3,072 - (66.91 %)
■	31 - 35 Mph : 748 - (16.29 %)
■	36 - 40 Mph : 436 - (9.50 %)
■	41 - 45 Mph : 192 - (4.18 %)
■	46 - 65 Mph (et +) : 143 - (3.11 %)

Start date: Monday, November 11, 2019 12:00 AM
End date: Tuesday, November 12, 2019 12:00 AM

Location:

Comments:

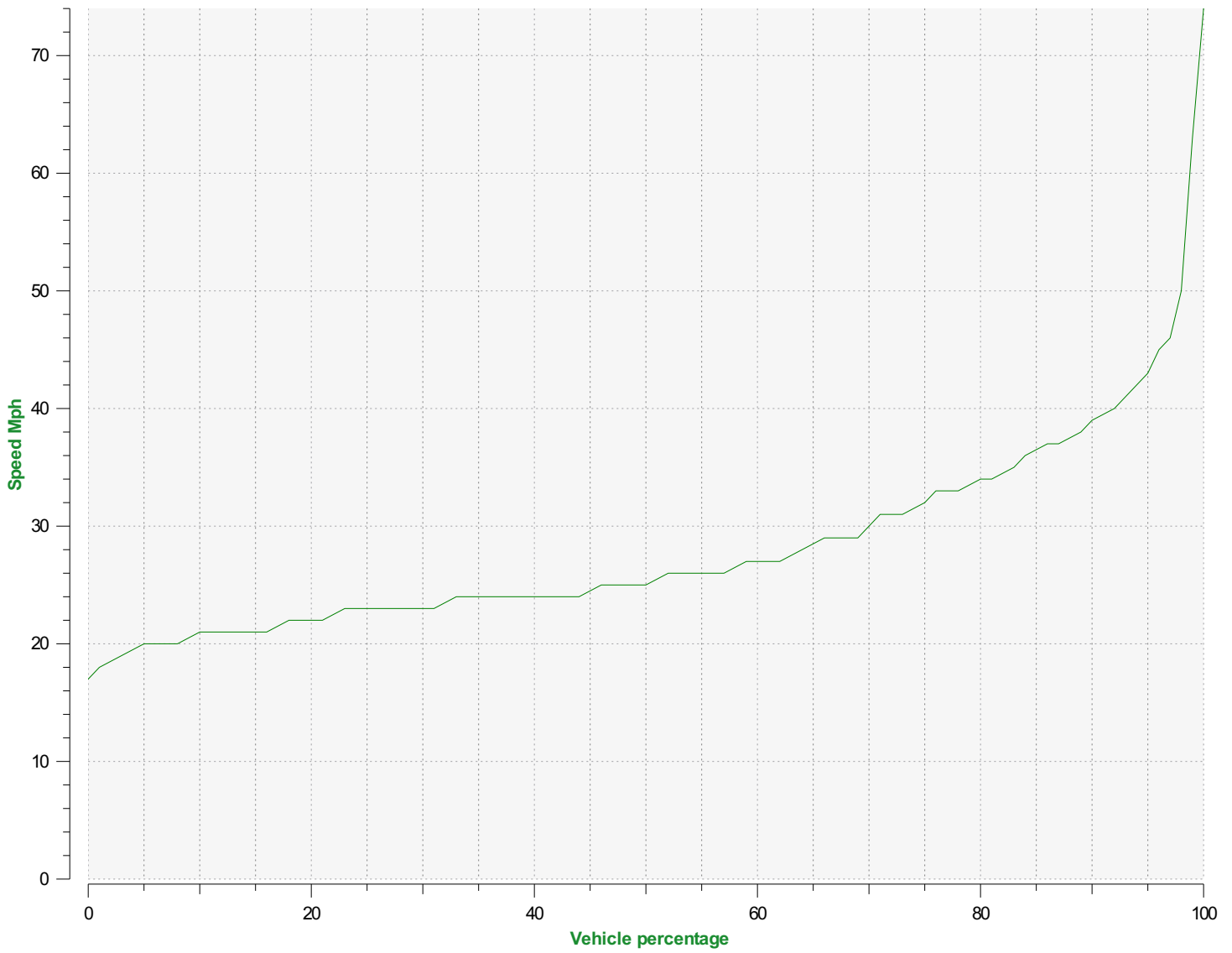
Outgoing vehicles



Start date: Monday, November 11, 2019 12:00 AM
End date: Tuesday, November 12, 2019 12:00 AM

Location:

Comments:



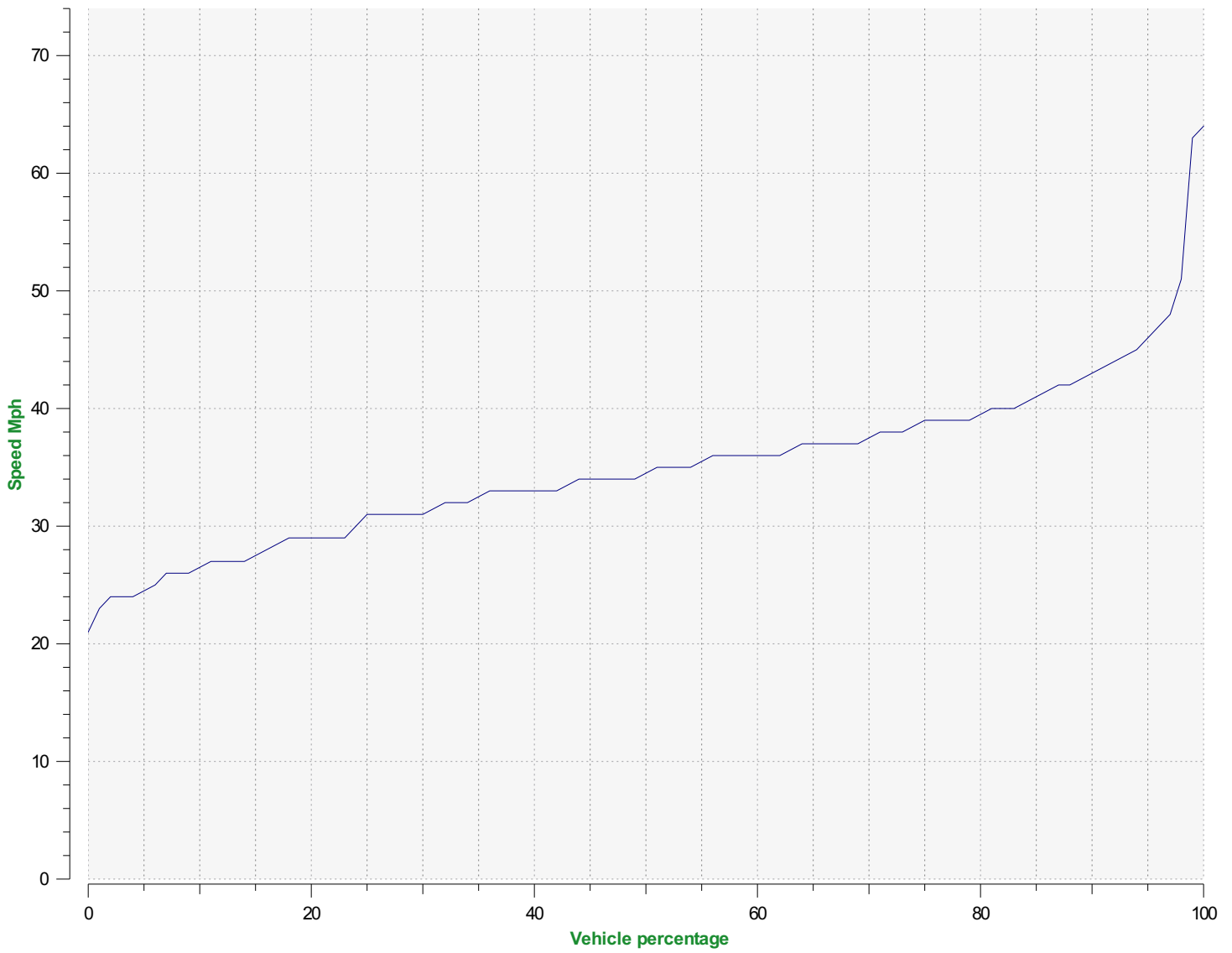
Speed percentiles (incoming)

V30: 23.00Mph **V50:** 25.00Mph **V85:** 36.00Mph

Start date: Monday, November 11, 2019 12:00 AM
End date: Tuesday, November 12, 2019 12:00 AM

Location:

Comments:



Speed percentile(outgoing)

V30: 31.00Mph **V50:** 34.00Mph **V85:** 41.00Mph

Start date: Monday, November 11, 2019 12:00 AM
End date: Tuesday, November 12, 2019 12:00 AM

Location:

Comments: